



Dedicated to Providing High-Quality Water Service in a Cost-Effective and Environmentally Sensitive Manner

OFFICERS

President

**Jay Lewitt**

Director, Division 5

Vice President

**Leonard E. Polan**

Director, Division 4

Secretary

**Gary Burns**

Director, Division 3

Treasurer

**Andy Coradeschi**

Director, Division 2

**Charles P. Caspary**

Director, Division 1

**David W. Pedersen, P. E.**

General Manager

**W. Keith Lemieux**

Counsel

HEADQUARTERS

4232 Las Virgenes Road

Calabasas, CA 91302

(818) 251-2100

Fax (818) 251-2109

WESTLAKE

FILTRATION PLANT

(818) 251-2370

Fax (818) 251-2379

TAPIA WATER

RECLAMATION FACILITY

(818) 251-2300

Fax (818) 251-2309

RANCHO LAS VIRGENES

COMPOSTING FACILITY

(818) 251-2340

Fax (818) 251-2349

www.LVMWD.com

MEMBER AGENCY OF THE METROPOLITAN WATER DISTRICT OF SOUTHERN CALIFORNIA

**Glen D. Peterson**

MWD Representative

The public may join this meeting virtually or attend in person. Teleconference participants will be muted until recognized at the appropriate time by the Board President. To join via teleconference, please use the following Webinar ID: <https://us06web.zoom.us/j/87149583003>

To join by telephone, please dial (660) 900-6833 or (346) 248-7799 and enter Webinar ID: 871 4958 3003

The public can also access and request to speak at meetings live on-line, with audio and limited video, at [www.lvmwd.com/livestream](http://www.lvmwd.com/livestream).

Call and Notice of Special Meeting of the Board of Directors of Las Virgenes Municipal Water District

A Special Meeting of the Board of Directors of Las Virgenes Municipal Water District is hereby called and notice of said Special Meeting is hereby given for 10:00 a.m. on Tuesday, September 12, 2023, at Las Virgenes Municipal Water District, 4232 Las Virgenes Road, Calabasas, CA 91302, to consider the following:

1. Call to Order and Roll Call
2. Public Comments
3. Presentation on Malibu Creek Ecosystem Restoration Project and Site Visit to Rindge Dam on Malibu Canyon Road
4. Adjourn

By Order of the Board of Directors  
JAY LEWITT, President

David W. Pedersen, P.E.  
Deputy Secretary of the Board

c: Each Director  
Dated: September 6, 2023

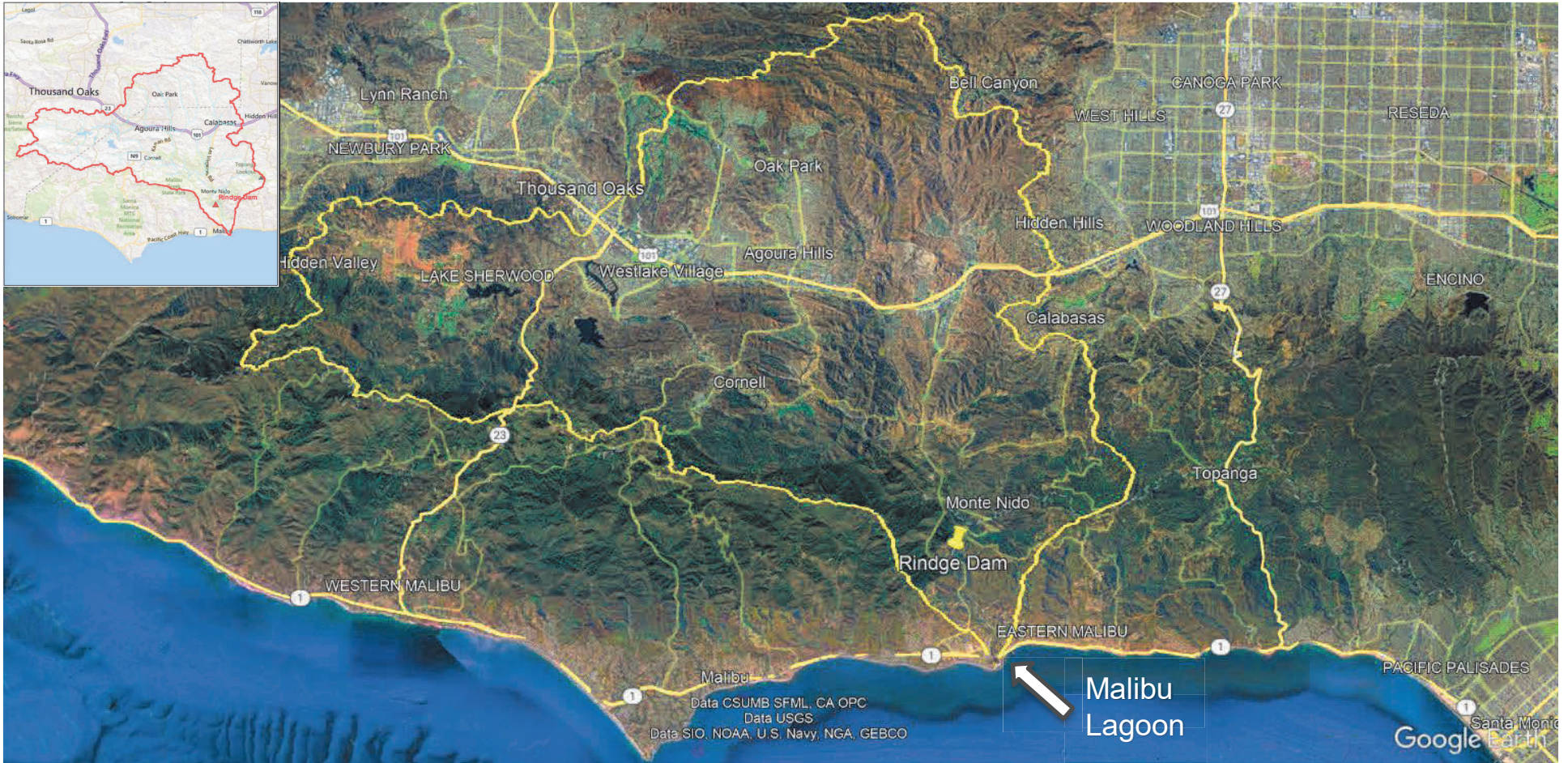


# Malibu Creek Ecosystem Restoration Project

LVMWD  
September 12, 2023

R.J. Van Sant  
California State Parks  
Senior Environmental Scientist

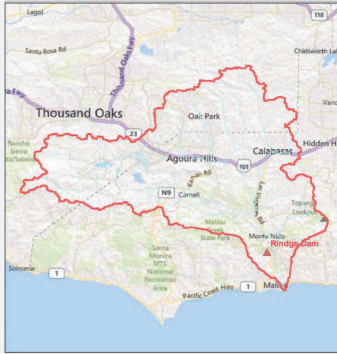




Malibu Lagoon

# Malibu Creek Watershed





## Malibu Creek Watershed

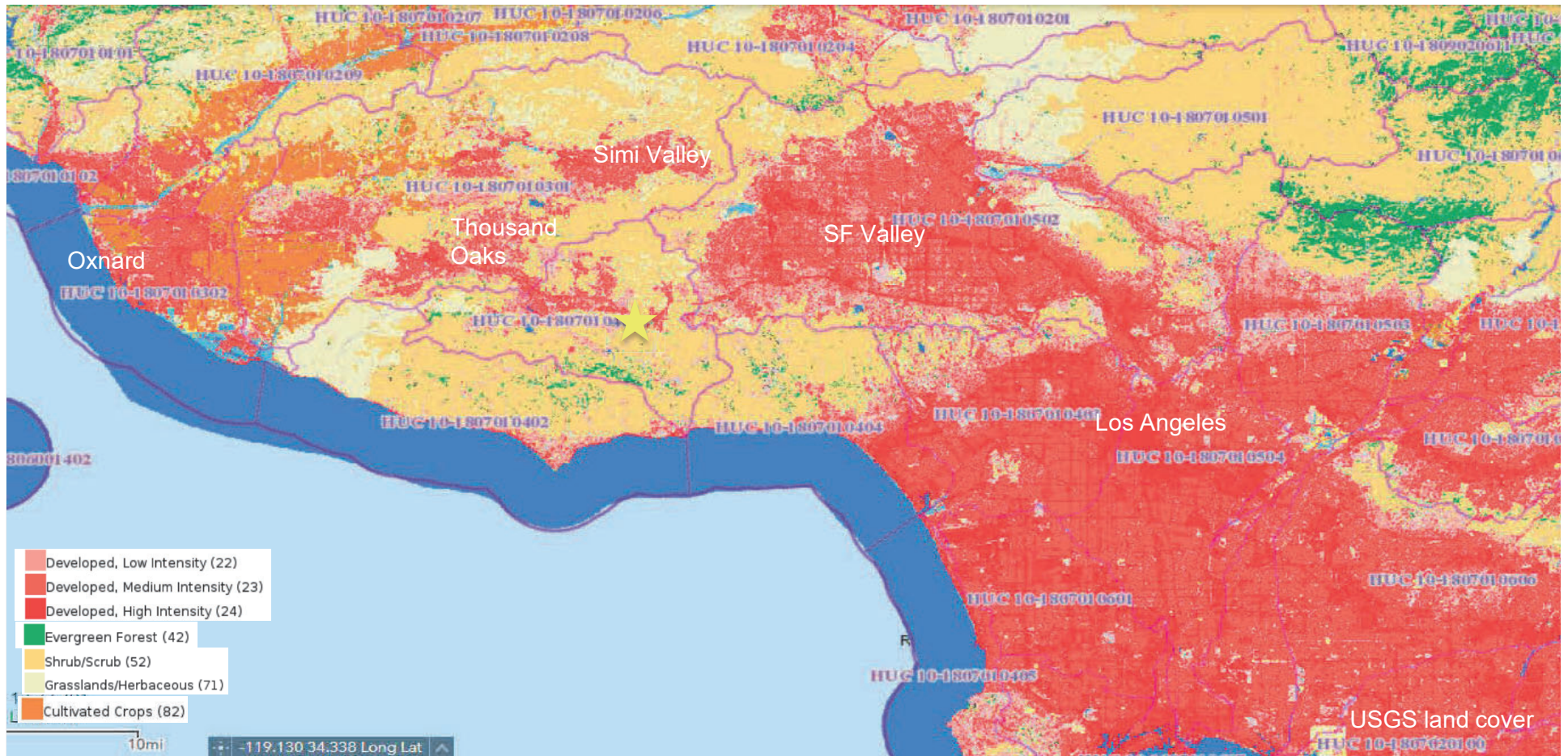


- 2/3 of watershed in LA County, 1/3 in Ventura County
- Drains approx. 110 square miles
- Second largest watershed draining into Santa Monica Bay
- ~90,000 residents
- Highest point – 3,100 feet. Lowest point – 0 feet

Malibu Lagoon

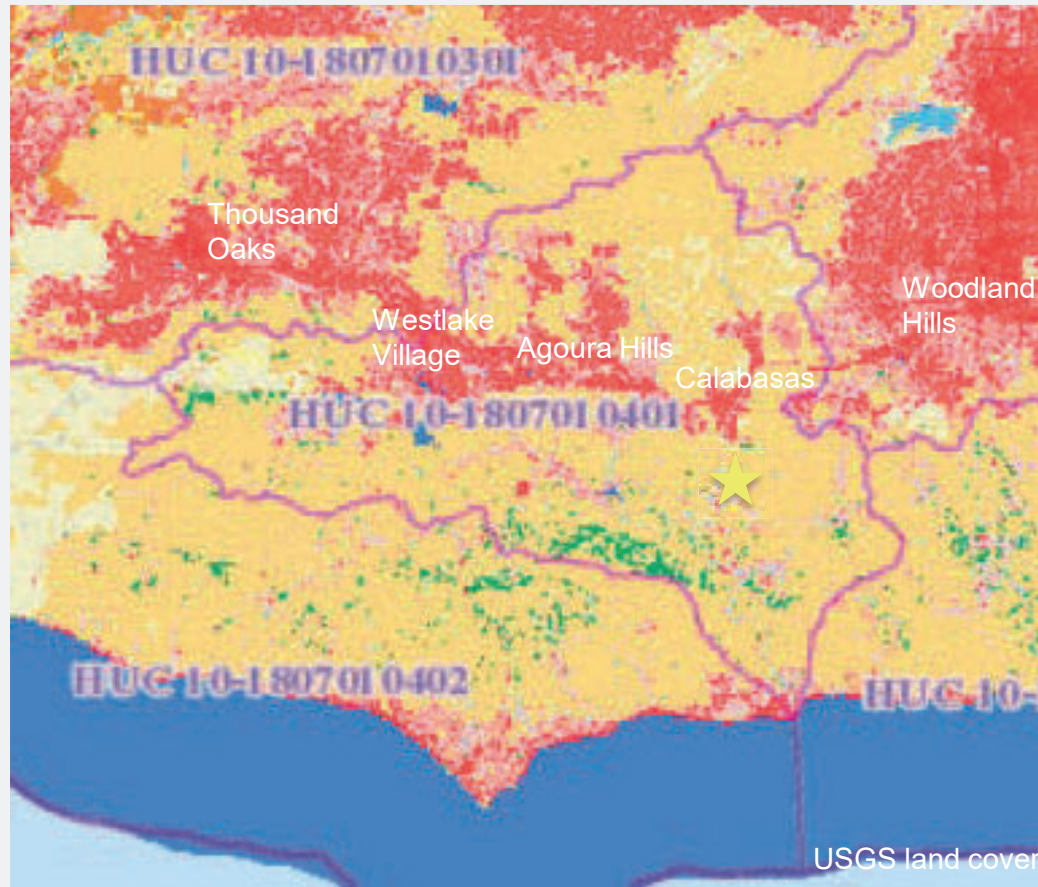
## Malibu Creek Watershed





## Malibu Creek Watershed – Land Cover





Malibu Creek Watershed – Land Cover



## Why Is This Watershed Important?

- ~75% undeveloped
- Large open space - Malibu Creek SP, Santa Monica Mtns. Nat. Rec. Area
- Diverse plant and animal life, biodiversity hotspot
- Cultural and historic resources
- Critical habitat for endangered steelhead and other species
- Malibu lagoon and beach – high recreation/visitation areas, 1 of 2 remaining estuaries in LA County

Malibu  
Lagoon

Malibu Creek Watershed







Southern CA steelhead  
Photo: CalTrout



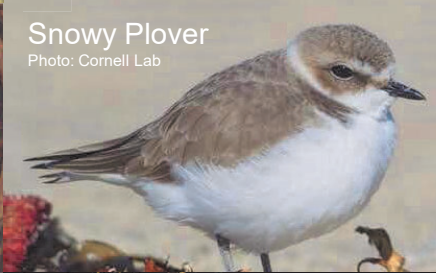
Pacific Lamprey  
Photo: The Columbian



Golden Eagle  
Photo: SD Zoo



Red-legged Frog  
Photo: Getty Images



Snowy Plover  
Photo: Cornell Lab



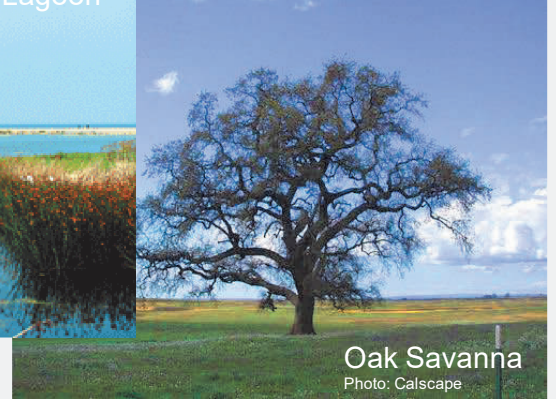
Coastal Lagoon  
Photo: NPS



Mountain Lion  
Photo: NPS



SM Mtn Dudleya  
Photo: Ron Vanderhoff



Oak Savanna  
Photo: Calscape



## Malibu Creek Watershed - Wildlife

## Native American History

Native American tribes inhabited SM Mountains for at least 7,000 years

Traditional lands of the Pipimaram (Fernandeño Tataviam), mitsqanaq'n (Ventureño Chumash), and Tongva (Gabrielino) people

## Modern History

Spanish ranchos, homesteaders, Ballard family

Movie/TV Industry – 20<sup>th</sup> Century Fox, M\*A\*S\*H, Planet of the Apes, Roots

Iconic and historic surf break – National Register

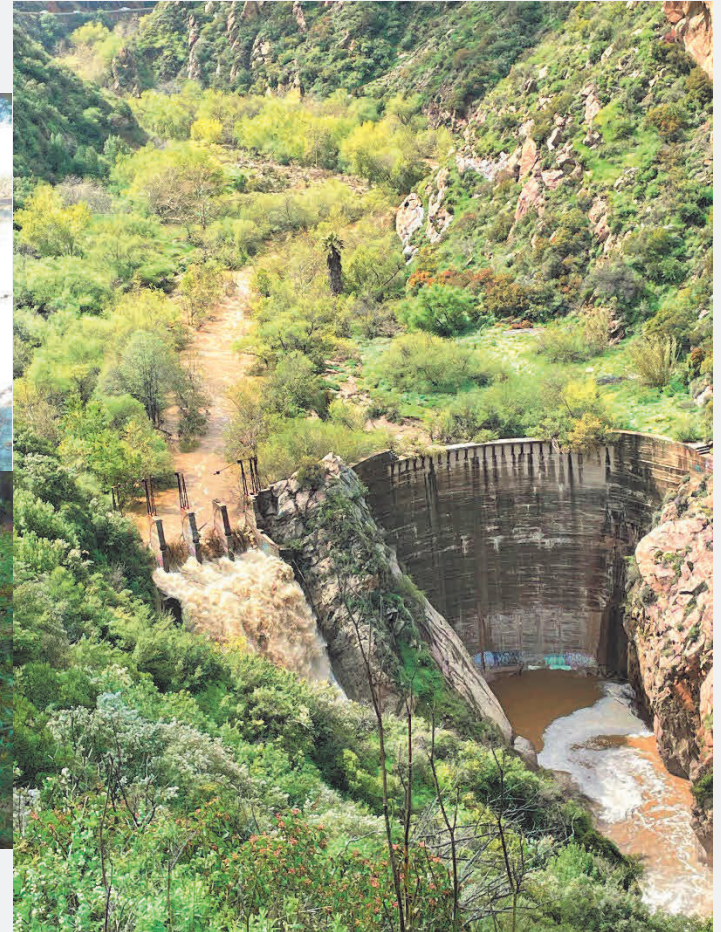


## Malibu Creek Watershed – Cultural and Modern History

## Project Description

Removal of Rindge Dam &  
~780,000 cubic yards of  
sediment behind dam

Modification/removal of  
eight upstream barriers  
along Las Virgenes and  
Cold Creeks



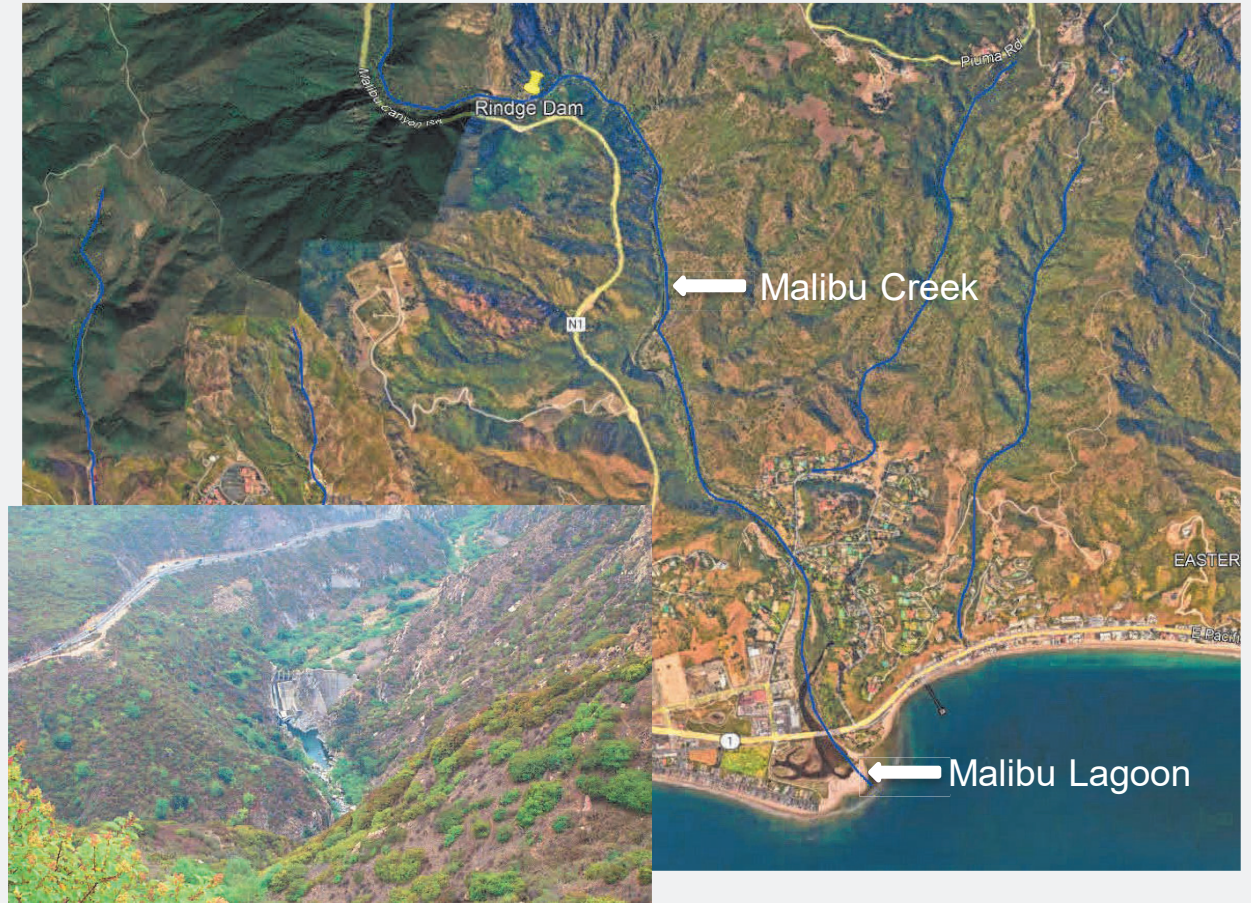
Malibu Creek Ecosystem Restoration Project

## Location

Rindge Dam located 3 miles from coast in Malibu Creek

Steep and narrow canyon

Within Malibu Creek State Park

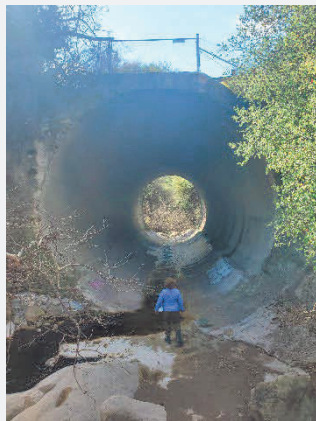
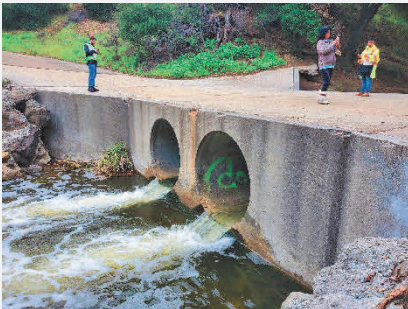


## Malibu Creek Ecosystem Restoration Project

## Location

Upstream barriers located along Cold Creek and Las Virgenes Creek

Within Malibu Creek SP, City of Calabasas, and private property



## Malibu Creek Ecosystem Restoration Project

Built by Rindge family in 1926 for irrigation/agriculture

Concrete dam and spillway - 102 feet tall x 140 feet wide

12 feet thick at base, 2 feet thick at top

1945 - spillway gates damaged

1945 – nearly full of sediment, 575 to 75 ac-ft

Served as water supply until mid 1960s

Decommissioned in 1967, acquired by State Parks in 1976



Photo 1.0 Steelhead angling success at the base of Rindge Dam (Malibu) in 1943. Photo provided by Fred Haggerty.



*Malibu Adamson House Foundation*

## Rindge Dam



## Objectives

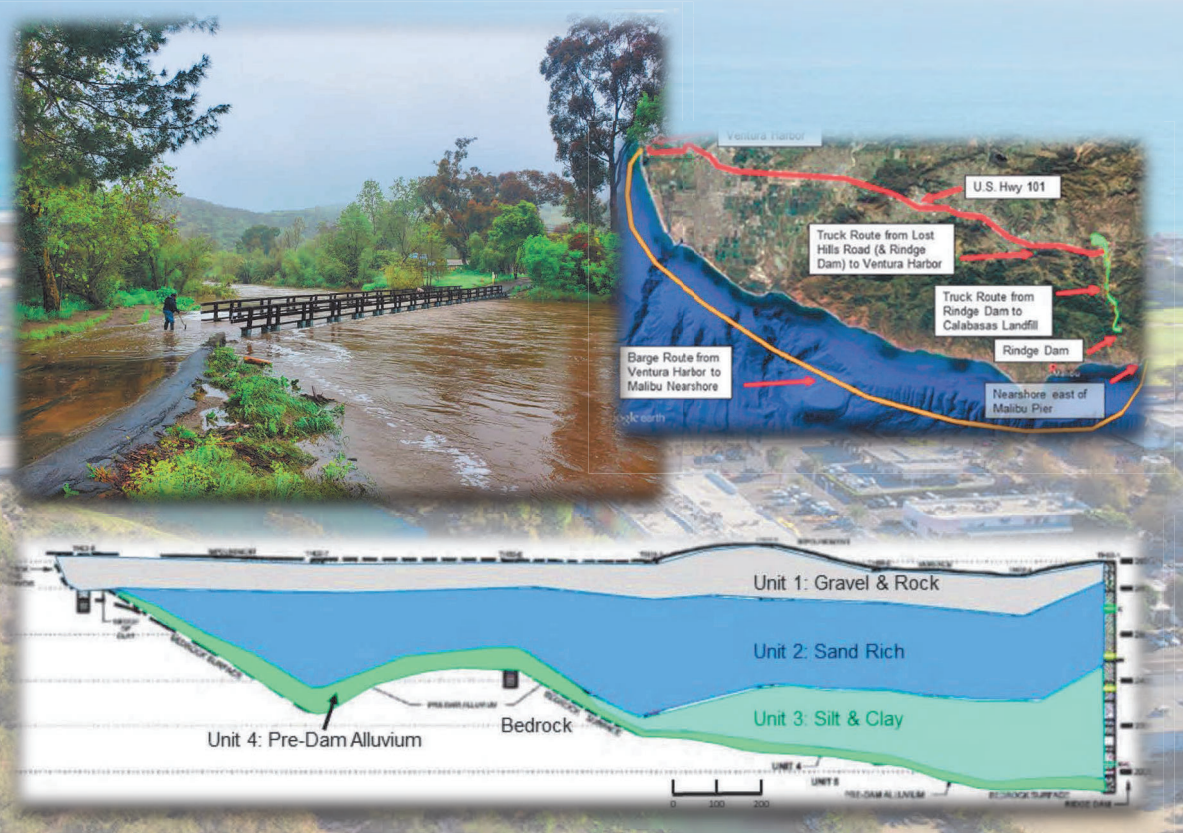
- Restore ecosystem function and increase habitat connectivity
- Restore 15 additional miles of stream habitat for the endangered southern California steelhead (*Oncorhynchus mykiss*) and other species
- Restore natural sediment transport - nourish the creek, beaches, and nearshore
- Improve public safety by removing the obsolete dam – injuries/deaths
- Dam serves no function – no flood control/storage capacity



## Malibu Creek Ecosystem Restoration Project

## Challenges

- Sediment placement/disposal
- Sensitive species in lagoon and downstream
- Cost – \$280+ mil.
- Truck traffic
- Downstream flooding



## Malibu Creek Ecosystem Restoration Project





## Timeline

- 1992 – US House of Reps. authorizes feasibility study
- 2017 – Feasibility study completed
- 2020 – Integrated Feasibility Report (IFR) and Env. Impact Statement/Report (EIS/EIR) completed
- 2021 – State legislature allocates \$12.5 mil – 90% design
- 2023 – Project design underway (technical investigations)
- 2025 – 35% and 65% design complete
- 2026 – 90% design complete
- 2027 – start construction?
- 2035 – completion?



Malibu Creek Ecosystem Restoration Project



[www.parks.ca.gov/MCERP](http://www.parks.ca.gov/MCERP)  
[www.restoremalibucreek.org](http://www.restoremalibucreek.org)

Partners



*Malibu Creek after removal of Rindge Dam and impounded sediment (USACE Feasibility Study - Rendering)*



# Malibu Creek Ecosystem Restoration Project