

1897 California Ave
Corona, CA 92881
(951) 808-9501

December 2, 2010

**Las Virgenes MWD
4232 Las Virgenes Rd
Calabasas, CA 91302**

Dear: **Roberta Bronstein**

K&B is currently creating a Base map in the city of **CALABASAS** for Southern California Edison showing all underground utilities. We are requesting facility maps on:

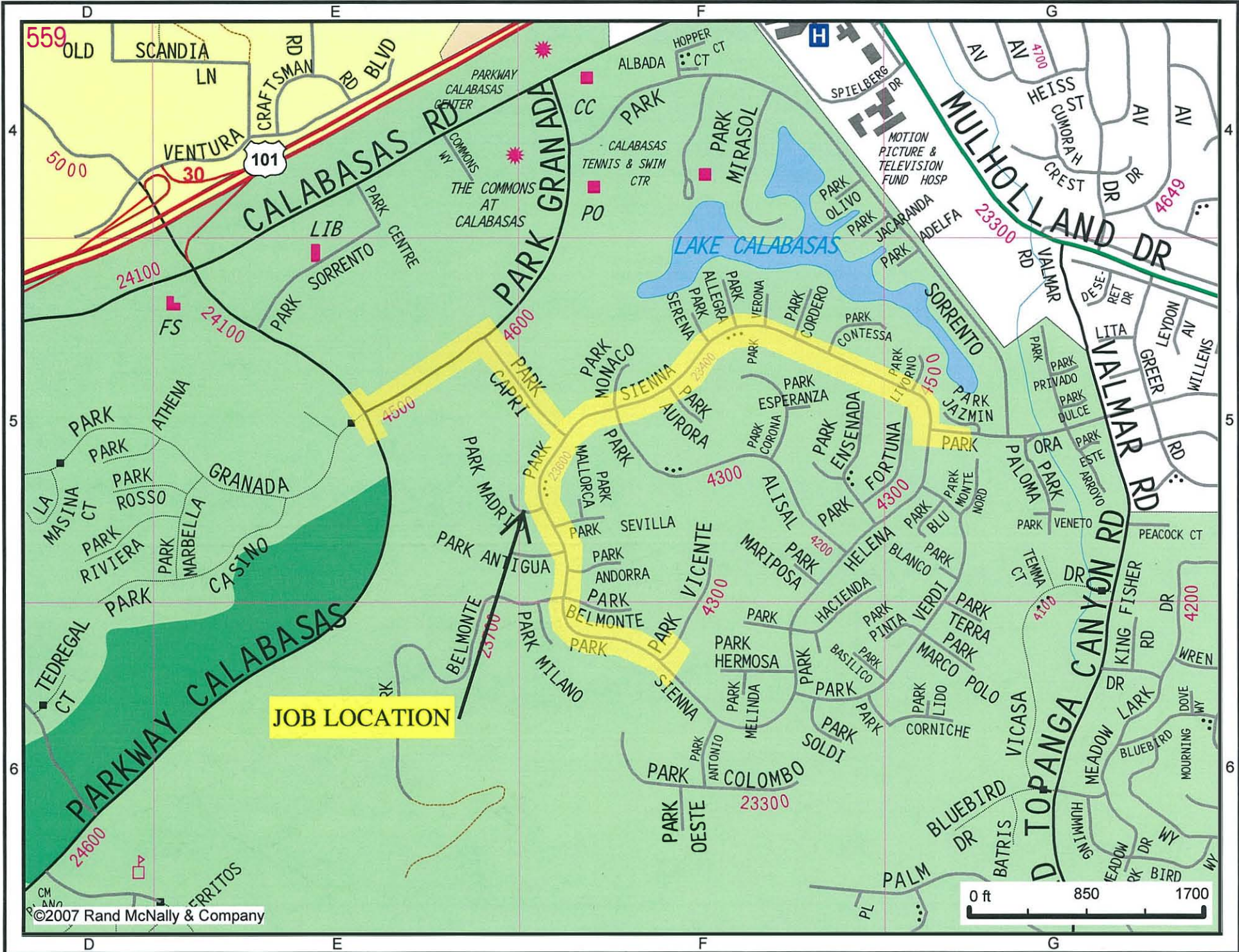
- 1. Park Sienna from Park Vicente to Park Ora**
- 2. Park Capri**
- 3. Park Granada between Park Capri & Parkway Calabasas**

showing where **Las Virgenes MWD** has placed their **water lines**. Attached is a copy of the Thomas Guide page with the job area highlighted. The Thomas page is **559-F5**.

If you have any questions feel free to contact me at (951) 808-9501, extension 203.

Thank you.

Sonja Flynn
Research Manager
P: 951-808-9501
F: 951-808-9518
E: sflynn@kbeng.net



JOB LOCATION





January 13, 2010

To Whom It May Concern:

K&B Engineering is authorized to act on behalf of Southern California Edison in matters pertaining to the acquisition of existing and proposed underground substructure maps showing size and location of all facilities and/or utilities within the franchise area throughout Southern California Edison service territory.

The information is required for the purpose of creating construction drawings for various overhead to underground conversion projects.

Sincerely,

A handwritten signature in black ink, appearing to read "Joshua A. Thiel", written over a horizontal line.

Joshua A. Thiel
Supervisor
New Development Project Design
Southern California Edison
(714) 796-9816