

**NOTICE OF PUBLIC HEARING  
LAS VIRGENES MUNICIPAL WATER DISTRICT**

**TO RECEIVE PUBLIC INPUT REGARDING BOARD OF DIRECTOR  
DIVISION BOUNDARIES**

**NOTICE IS HEREBY GIVEN** that pursuant to California Elections Code Section 22001, the Board of Directors of Las Virgenes Municipal Water District will conduct a public hearing to receive input regarding potential redistricting of Director Divisions on Tuesday, March 15, 2022, at 9:00 AM, at Las Virgenes Municipal Water District Headquarters, Board Room, 4232 Las Virgenes Road, Calabasas, California 91302. The public is invited to provide input and/or submit information regarding the proposed division boundaries. The draft map is available on the District's website at [www.lvmwd.com/about-us/transparency/public-records/public-information-and-documents](http://www.lvmwd.com/about-us/transparency/public-records/public-information-and-documents).

Questions or input may be mailed to:

Las Virgenes Municipal Water District  
Attn: Executive Assistant/Clerk of the Board  
4232 Las Virgenes Road  
Calabasas, CA 91302

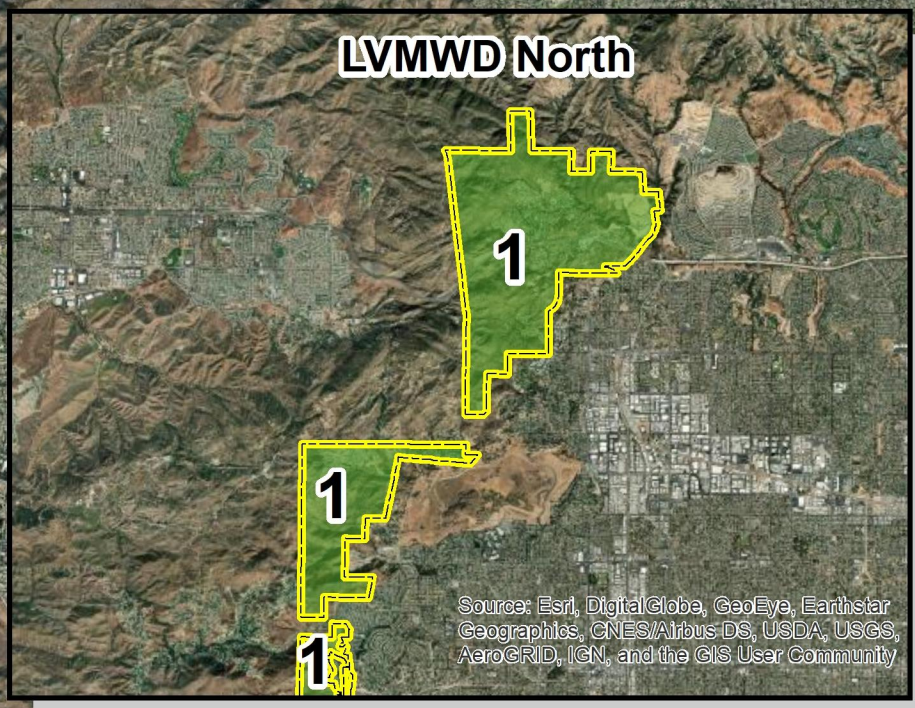
Or by email to: [jguzman@lvmwd.com](mailto:jguzman@lvmwd.com)

**BY ORDER OF THE BOARD OF DIRECTORS OF LAS VIRGENES MUNICIPAL  
WATER DISTRICT.**

/s/ Josie Guzman, MMC  
Deputy Secretary of the Board

Publish on March 3, 2022.





**Census 2010 Population**

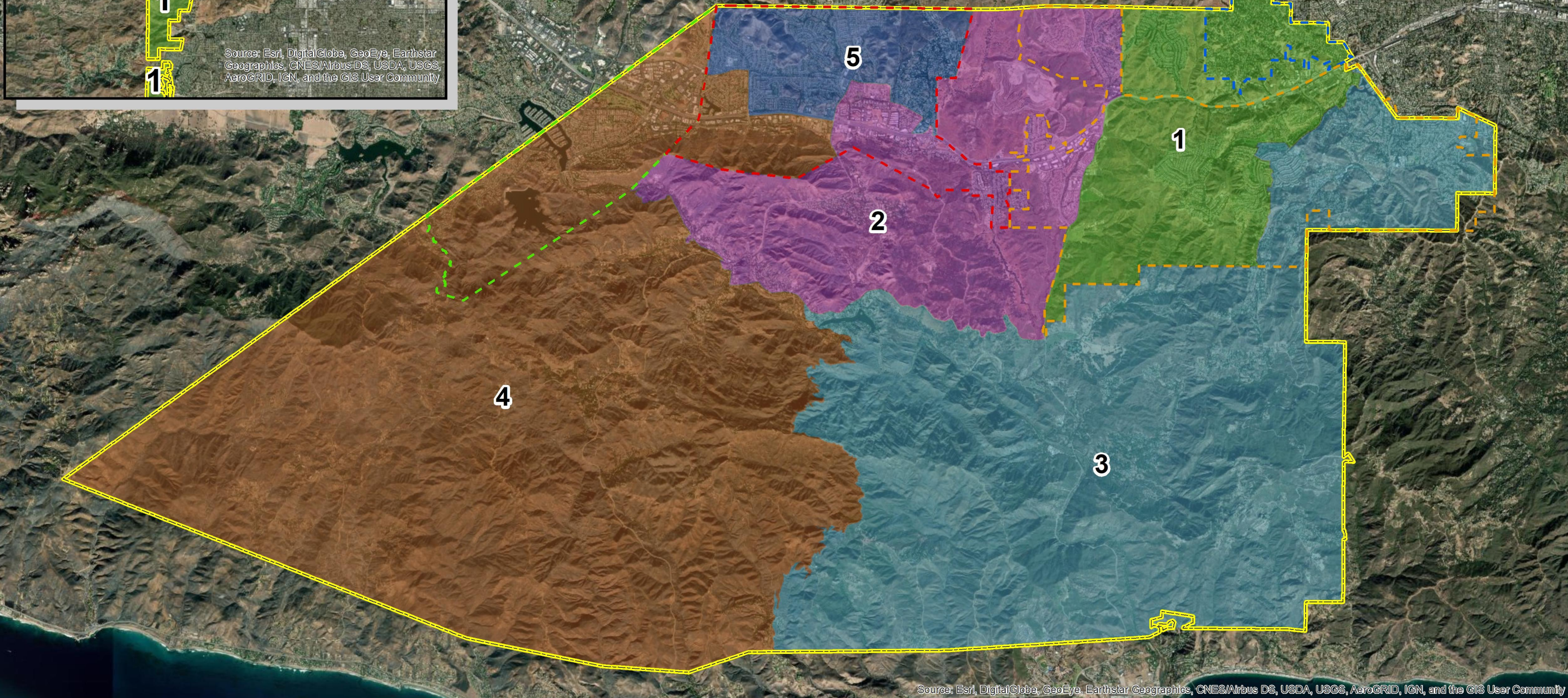
| Division     | Population   | % Average |
|--------------|--------------|-----------|
| 1            | 13262        | 98%       |
| 2            | 13706        | 101%      |
| 3            | 13609        | 101%      |
| 4            | 13379        | 99%       |
| 5            | 13672        | 101%      |
| <b>Total</b> | <b>67628</b> |           |

**Legend**

- LVMWD Boundary
- Westlake Village
- Hidden Hills
- Calabasas
- Agoura Hills

**LVMWD Director Divisions - Current**

- 1 - Caspary
- 2 - Lo-Hill
- 3 - Renger
- 4 - Polan
- 5 - Lewitt

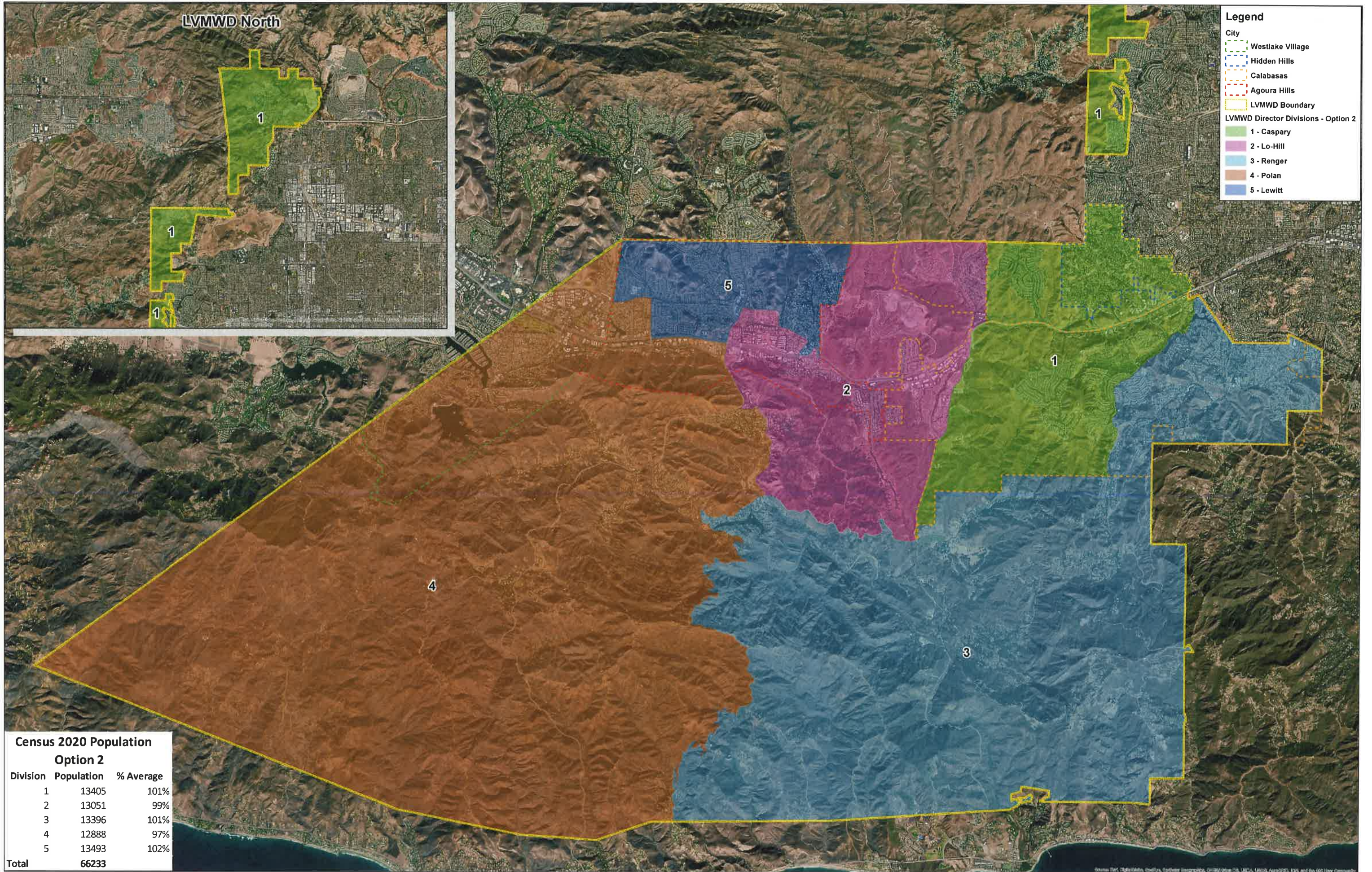


Source: Esri, DigitalGlobe, GeoEye, Earthstar Geographics, CNES/Airbus DS, USDA, USGS, AeroGRID, IGN, and the GIS User Community



**LVMWD Director Divisions - Current**





- Legend**
- City**
- Westlake Village
  - Hidden Hills
  - Calabasas
  - Agoura Hills
  - LVMWD Boundary
- LVMWD Director Divisions - Option 2**
- 1 - Caspary
  - 2 - Lo-Hill
  - 3 - Renger
  - 4 - Polan
  - 5 - Lewitt

**Census 2020 Population**  
**Option 2**

| Division     | Population   | % Average |
|--------------|--------------|-----------|
| 1            | 13405        | 101%      |
| 2            | 13051        | 99%       |
| 3            | 13396        | 101%      |
| 4            | 12888        | 97%       |
| 5            | 13493        | 102%      |
| <b>Total</b> | <b>66233</b> |           |

**LVMWD Director Divisions - Option 2 (Moved some 2020 Census Blocks from Division 2 to 4 to better equalize populations)**

